

PDF Reader study environment

To be able to read and actively manage the PDF files, they should be opened within the PDF Reader Study Environment. It is accessed by clicking on «PDF» within the ALFa READER toolbar, or by dragging a PDF directly on the toolbar.

Opening PDF files

PDFs can be opened in the study PDF Reader by clicking on «Open» or by dragging them directly into the Study Environment. Several PDFs can be opened at the same time. Within the Study Environment, the user can listen the highlighted texts through the voice engine and is free to make any customization (highlighting, notes, stamps, exports, and so on), but before closing the tool, the document with its modifications must be saved.

Reading Mode: to set the mode for reading PDF files.

Standard click: the cursor can be placed on any point of the page and then by clicking on the Play button, the speech synthesis starts reading the text from that position on.

Click and Play: with this mode, by just clicking somewhere on the page the voice starts reading the text.

Highlighted: to only read the parts of the texts which are highlighted.

Interfaces: to easy the use of the Study Environment, ALFa READER 3 allows to choose between three interfaces to work on the PDF files, which offer different levels of depth and features. Simply clicking on the appropriate icon, allows to dynamically switch from one level to the other.

Select text: to select a part of text to read.

PDF File Structure: Enables / Disables the control of reading order on the PDF file.

Export summary: allows you to export the highlighted parts, the notes and added text in RTF format.

Export: Exports the entire contents of the file as text in TXT format.

Record: to record and attach the obtained audio file to the PDF.

Erickson SOFTWARE
ALFa READER 3
Makes Reading Easier

QUICK USER'S GUIDE

How to use ALFa READER 3

ALFa READER is a vocal reader working on USB key or downloadable for installation. To run the software, just open the folder and click on the Start.exe icon. When using the reader for the first time, it will be asked to save any possible content. It is recommended to perform this operation and the process may last several minutes. Once the application is launched, just point the part of the page (Word or Writer) where reading needs to start and press Play. Instead, to read a PDF file, open it before within the PDF Reader study environment, position the cursor and then click Play.

- PLAY AND STOP:** Starts and stops the text reading.
- SKIP:** Allows to jump from a sentence to another.
- READING SPEED:** Increases or decreases the reading speed.
- CALCULATOR:** Opens the calculator.
- CONFIGURATION:** To set the voice, text emphasizing, reader customization (see next pages).
- REDUCE AND CLOSE:** Allows to reduce the program in bottom menu bar and close it.
- STRETCH:** Increases the size of the menu bar.
- USER'S GUIDE:** Opens the user's guide.
- EXPORT AUDIO FILE:** Allows to export the selected text in the mp3 or wav format.
- TXT:** Allows to export the text to the TXT format.
- ONLINE SEARCH:** Activates the connexion to some search engines.
- ECHO WHILE WRITING:** Activates the echo function while writing in Word or Writer, the speech synthesis says aloud what is written.
- READING MODE:** Activates the articulated reading word by word or continuously reading sentence by sentence.
- PDF READER STUDY ENVIRONMENT:** Opens the study environment.
- OPTIONS:** CONTINUOUSLY READING, ARTICULATED READING, ECHO WHILE WRITING.
- TOOLS:** PDF, CALCULATOR, CONFIGURATION, TEXT, SPEECH.



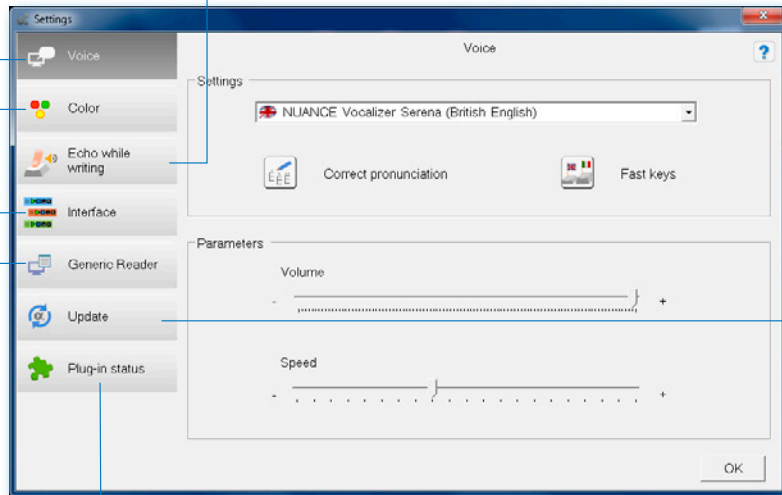
Settings

To set the various reading parameters, from the voice to the graphical interface, ALFa READER 3 offers a single window, in which it is possible to quickly and intuitively configure the voice player that better suits your needs. Click the cog/wheel button to open the Settings window.

Voices: in order to set the voice and language, the correction of the pronunciation if needed, the hotkeys to switch between voices, the volume and the reading speed.

Colors: to change the colors for text highlighting.

Echo while writing: to configure the echo mode when the user is writing, this way the speech synthesis reads aloud what is written.



Interface: to change the graphical interface and choose between the normal mode or maxi mode.

Generic Player: to set the Generic Reader of ALFa READER, this way, the texts are read in a separate window.

Online update: to download any ALFa READER updates when available.

Plug-in Status: to check whether the various programs' plug-ins, which interface with this software, work properly.

Correct pronunciation

Inside the Settings window and within the menu Voice, there is the command «Correct pronunciation», a feature that allows to set the correct way that a word or an expression has to be pronounced. The user can tune it as she or he prefers. To start, select «New» and write in the first row (of dialog window that appears), the word whose pronunciation must be modified and in the underneath field, the way it must actually be read aloud, every time the software encounters it. It is possible to modify the inserted words by double clicking in the table within the window, or by selecting the desired row and clicking «Modify»; to delete a word, just select it and click «Delete».

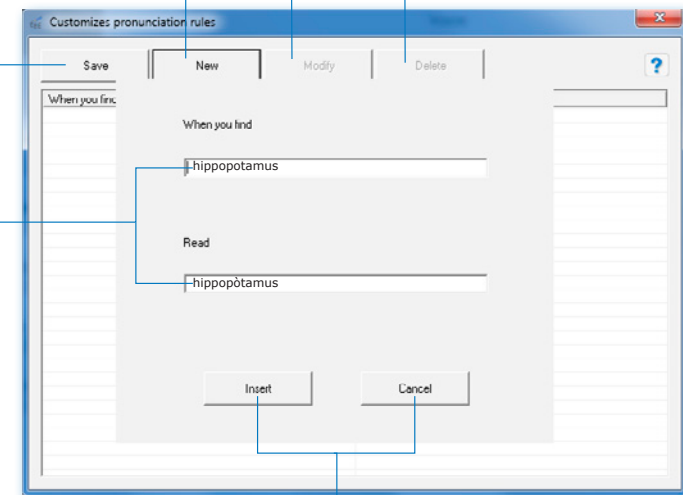
Every language has its own dictionary. For example, corrections set for the English language, apply to all items of English but will not apply to foreign languages.

Save: Saves the changes made to the correction table.

New: to enter a new word/term.

Modify: to select a row of the table in order to modify the correction.

Delete: to select a row in the table in order to eliminate a correction.



When you find: field in which to insert the word to correct.

Read: In this field it is written how the software should read the word inserted in the above field.

Enter: To confirm the correction and insert it into the table.

Cancel: to Cancel the insertion of the word.